

# 12<sup>th</sup> World Nursing Forum

April 17, 2023 | Webinar

## Keynote Forum



# 12<sup>th</sup> WORLD NURSING FORUM

April 17, 2023 | Webinar

Received date: 06:03:2023 | Accepted date: 08:03:2023 | Published date: 27:04:2023



## Anne Dichmann Sorknæs

Odense University Hospital & Svendborg Hospital, Denmark & The University of Southern Denmark

### Important to involve relatives - Positive results of implementation of Family Focused Nursing

When a patient is affected by illness, the whole family is affected. It can be difficult for family members to talk about the challenges the illness presents to them, and find solutions to the challenges. Wright and Leahey have developed a model for Family Conversations, Calgary Family Assessment Model (CFAM) and Family Intervention Model (CFIM). The purpose is to involve and support the patient/family.

**Theory/Methods:** At the Department M/FAM all nursing staff are trained in CFAM and CFIM. M/FAM has set up a nursing clinic for patient/family conversations due to an increased need. All patients and their families who have had contact with M/FAM and who need it can be offered conversations of 40 minutes duration.

**Results:** Families experience the conversations as a free space where they can talk openly together about what affects them without it only being about care and treatment of the disease.

It as a more in-depth conversation, where difficult topics such as death also are discussed.

They put into words and heard how they each experience the disease, what ideas they have, what challenges they experience, and they become aware that they do not necessarily have the same experiences.

Supported by nurses, they find out for themselves what resources they have in the family and how to cope/solve the challenges.

The nurses find the family conversations relevant and meaningful, and it gives great job satisfaction.

**Conclusions:** The clinic have become a huge success. All times are booked. Families express it as a satisfying, different and intense way of talking. It is meaningful and gives great job satisfaction to the nurses. There is great interest in the clinic both among health professionals and families. We believe that the clinic can help recruit and retain nurses in the ward at a time of shortage of nurses.

#### Recent Publications

1. Assessment of the Effectiveness, Socio-Economic Impact and Implementation of a Digital Solution for Patients with Advanced Chronic Diseases: The ADLIFE Study Protocol. International Journal of Environmental Research and Public Health, 2023-02 | Journal article | Author: Borja Garcia-Lorenzo; Ania Gorostiza; Nerea González; Igor Larrañaga; Maider Mateo-Abad; ana Ortega-Gil; Janika Bloemeke; Oliver Groene; Itziar Vergara; Javier Mar et al. , DOI: 10.3390/ijerph20043152
2. Positive experiences from a newly established Clinic for Family Conversations - Important to involve relatives. International Journal of Integrated Care, 2022-11-04 | Journal article, DOI: 10.5334/ijic.icic22119, Part of ISSN: 1568-4156, CONTRIBUTORS: Anne Dichmann Sorknaes; Janne Rasmussen
3. A review on the effects of Shared Decision-Making (SDM) performed with the purpose of implementing SDM in the ADLIFE

# 12<sup>th</sup> WORLD NURSING FORUM

April 17, 2023 | Webinar

project. International Journal of Integrated Care 2022-11-04 | Journal article, DOI: 10.5334/ijic.icic22051, Part of ISSN: 1568-4156, CONTRIBUTORS: Anne Dichmann Sorknaes; Søren Udby; Natassia Kamilla Juul; Camilla Filtenborg Boll; Thea Damkjær Syse; Irati Erreguerena Redondo; Dolores Verdoy Berastegui; Ana Ortega Gil

## Biography

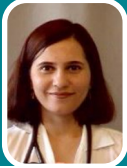
Anne Dichmann Sorknæs, senior nurse, RN, MSc in Nursing, PhD, works currently as Associate Professor at the Internal Medicine & Emergency Department (M/FAM), Odense University Hospital & Svendborg Hospital and at the University of Southern Denmark. The focus areas of research are mainly family-focused nursing and telemedicine.

anne.dichmann.sorknaes@rsyd.dk

# 12<sup>th</sup> WORLD NURSING FORUM

April 17, 2023 | Webinar

Received date: 24:11:2022 | Accepted date: 26:11:2022 | Published date: 27:04:2023



## Rozmeen Shivji

Rush University College of Nursing, USA

### Nurses' knowledge and perception about developing an advance practice nurse role in Pakistan: a qualitative study

**Problem statement:** The advanced practice nurse (APN) is a masters prepared registered nurse with sound knowledge and clinical expertise for expanded practice which is defined by the country in which APN practices. The growth of the APN role has shown profound healthcare development outcomes including improvement in quality of patient care and patient safety, mitigation of the physician shortage in underserved areas, improved perception of the public image of nursing, and cost of delivery. The APN role was established in the 1960s in the United States. After five decades, approximately fifty countries have adopted the APN model. However, Pakistan healthcare system has yet to embrace the APN role.

**Purpose of the study:** The purpose of this study is to identify nurses' knowledge and perception about developing an advance practice nurse role in Pakistan. Methodology: Twelve semi-structured interviews were conducted among nurses from all over Pakistan. Data analysis was performed by thematic analysis using thematic network.

**Results:** The preliminary data analysis revealed that nurses believed introducing APN role in Pakistan will enhance accessibility of healthcare in the underserved areas. In tertiary care settings, APN will bring consistency in care delivery which will improve quality of care. APN will deliver a cost-effective care and will be more approachable. Additionally, establishing APN role will improve nurses' image and career prospects which will increase nurses retention and satisfaction rate. However, nurses expressed that Pakistan's political and legislative structure, opposition from the physicians, lack of quality nursing education, and unacceptability from general public would be the major limitations for establishing APN role. Some nurses also expressed the opposition from seasoned nurses and nursing leaders as one of the barriers.

**Conclusion and significance:** It is critical to develop APN role in Pakistan to address the growing need for healthcare access, improved patient and population outcomes, and increased recognition of nursing profession and career opportunities.

#### Recent Publications

1. Almukhaini, S., Martin-Misener, R., Weeks, L. E., Macdonald, M., Hussain, H., Macdonald, D., Al-Ismaïli, Z., Al-Fahdi, N., & Rothfus, M. A. (2020). Advanced practice nursing roles in Arab countries in the Eastern Mediterranean region: a scoping review protocol. *JBI Evidence Synthesis* 19(4), 891-898. <https://10.11124/jbies-20-00002>
2. Behrens, S. A. (2018). International Nursing: Constructing an Advanced Practice Registered Nurse Practice Model in the UAE: Using Innovation to Address Cultural Implications and Challenges in an International Enterprise. *Nursing Administration Quarterly*, 42(1), 83-90. <https://10.1097/NAQ.0000000000000273>
3. Bryant-Lukosius, D., Spichiger, E., Martin, J., Stoll, H., Kellerhals, S. D., Fliedner, M., Grossmann, F., Henry, M., Herrmann, L., Koller, A., Schwendimann, R., Ulrich, A., Weibel, L., Callens, B., & De Geest, S. (2016). Framework for Evaluating the Impact of Advanced Practice Nursing Roles. *Journal of Nursing Scholarship*, 48(2), 201-209. <https://10.1111/jnu.12199>

# 12<sup>th</sup> WORLD NURSING FORUM

April 17, 2023 | Webinar

## Biography

Rozmeen Shivji is an assistant professor in the Adult Gerontology Acute Care, Doctor of Nursing Practice Program at RUSH College of Nursing, Chicago, USA. She is a board-certified Acute Care Nurse Practitioner (ACNP). She has practiced as ACNP for over 15 years in various settings including medical intensive care, lung transplant, neuro-interventional radiology and leukemia. She has a vast teaching experience; she has traveled internationally (Africa and Asia) to teach critical care nursing. Her research interests are growth and development of APN role, utilization of rapid response systems/teams, and application of high-fidelity simulation in teaching and learning.

rozmeen\_shivji@rush.edu