

2nd World Congress on **Otolaryngology and Wound Care**

August 30, 2021

Recurrent paralysis of the facial nerve with sigmoid sinus thrombosis

Mohamed Khamis Tolba Mahmoud Abdalla

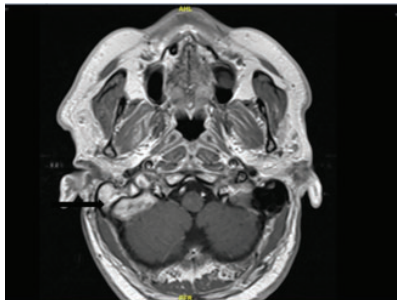
Nation Guard Hospital, Saudi Arabia

This article presents a case with a history of 6 attacks of alternating facial palsy over the past 24 years. The patient presented to our clinic with left-sided facial paralysis associated with extensive thrombosis of the right sigmoid sinus and proximal jugular vein.

Case presentation: A 46-year male patient presented with a four-day history of sudden onset grade VI left facial nerve paralysis with a history of 5 distinct episodes on both sides. No abnormalities were discovered by general and local examination but left facial paralysis. MRI and CT venogram revealed a thrombus involving the right transverse sinus's distal aspect extending to the right sigmoid sinus and proximal jugular vein.

Management and Outcome: The condition improved entirely after four weeks with steroids.

Discussion: Recurrent facial palsy accounting for 5.7–11.9% of all acute facial palsy cases; several disease entities may be responsible for that condition.



Mohamed_khameess@yahoo.com