

Three-dimensional echocardiography of tricuspid valve for visualizing all the three leaflets

Raj Kumar, MD and Rahul Mehrotra, MD

Kumar R, Mehrotra R. Three-dimensional echocardiography of tricuspid valve for visualizing all the three leaflets. Curr Res Cardiol 2017;4(3):35

Three-dimensional echocardiography offers a unique opportunity of visualizing all the three leaflets of tricuspid valve in en-face view from transthoracic windows. It is very useful in localizing the position of the pacing leads and for planimetry (Figures 1 and 2).

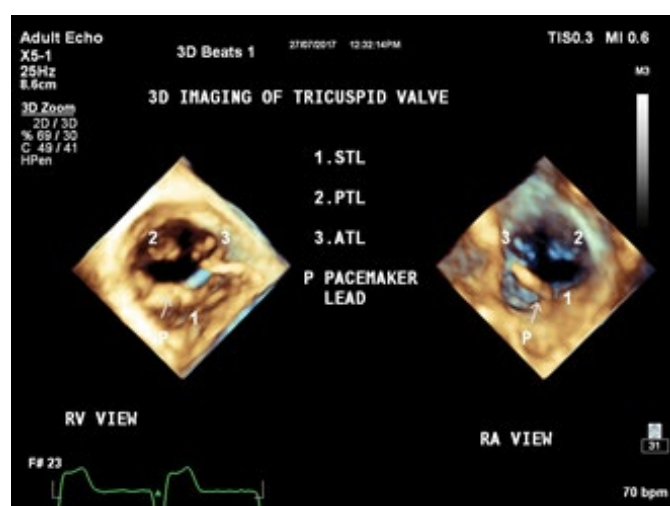


Figure 1) Three dimensional images of the tricuspid valve in open position with pacing lead passing between the anterior and septal leaflets, seen from the RA and RV perspective (full volume images, cropped and displayed in standard format keeping the septal leaflet at 6 O' clock position)

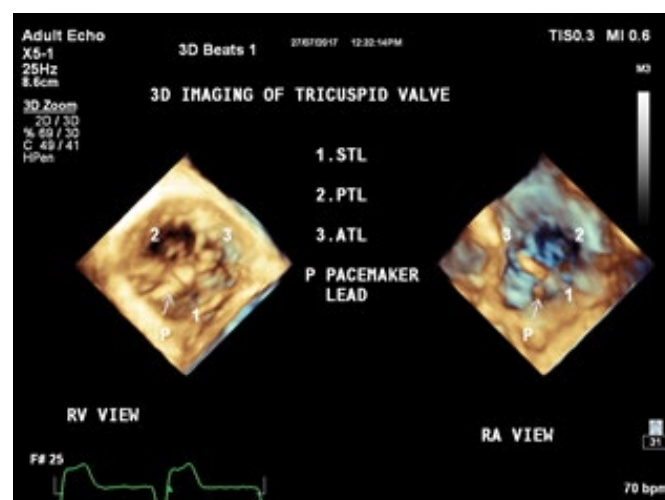


Figure 2) Three dimensional images of the tricuspid valve in closed position with pacing lead passing between the anterior and septal leaflets, seen from the RA and RV perspective (full volume images, cropped and displayed in standard format keeping the septal leaflet at 6 O' clock position)

Non-Invasive Cardiology, Max Super Speciality hospital, Saket, New Delhi, India

Correspondence: Dr Rahul Mehrotra, MD, Non-Invasive Cardiology, Max Super Speciality hospital, Saket, New Delhi, India, Telephone 011 2651 5050, e-mail Rahul.Mehrotra@maxhealthcare.com

Received: August 21, 2017, Accepted: August 22, 2017, Published: August 24, 2017



This open-access article is distributed under the terms of the Creative Commons Attribution Non-Commercial License (CC BY-NC) (<http://creativecommons.org/licenses/by-nc/4.0/>), which permits reuse, distribution and reproduction of the article, provided that the original work is properly cited and the reuse is restricted to noncommercial purposes. For commercial reuse, contact reprints@pulsus.com